
Serial Number Locations

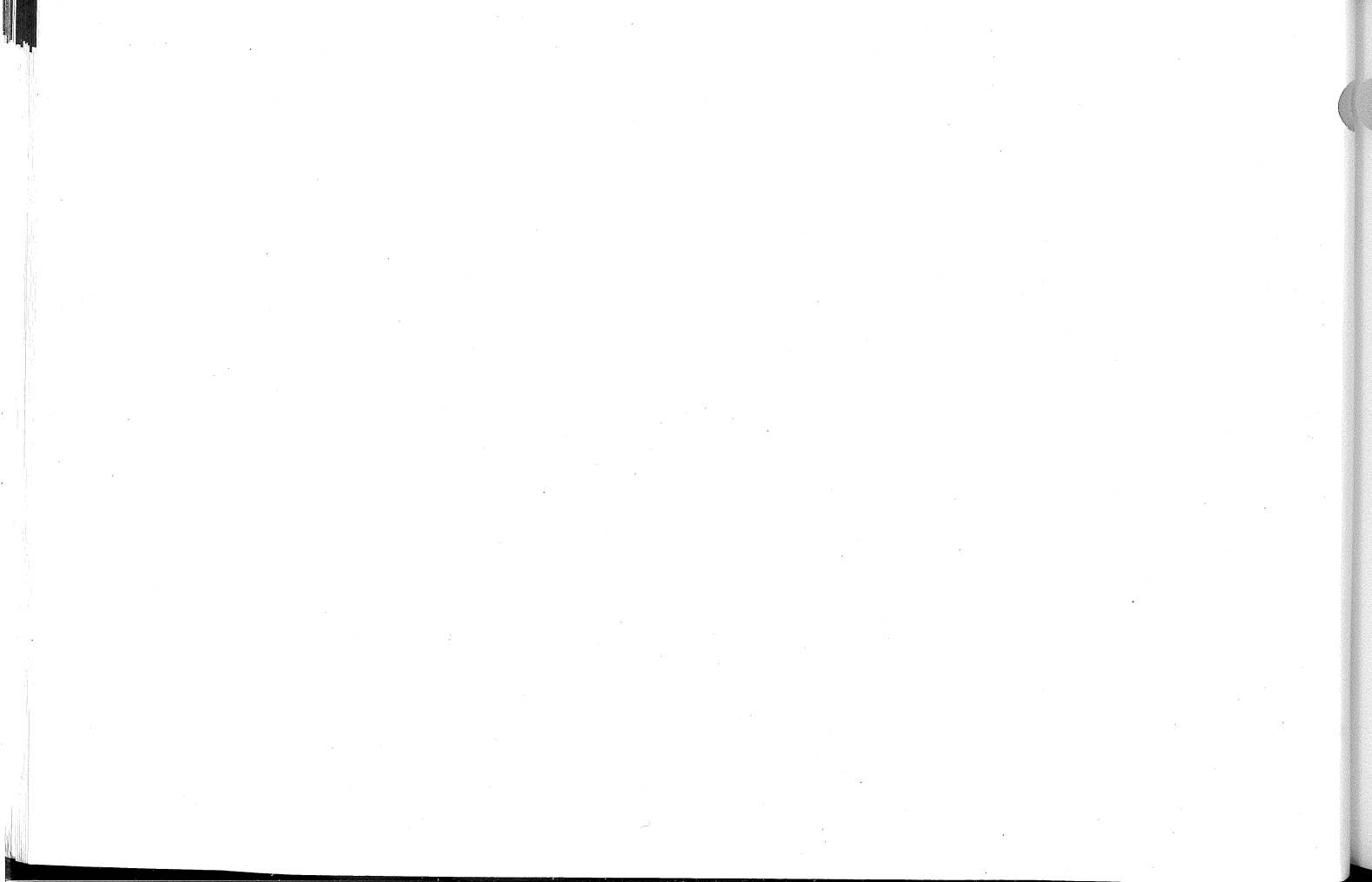
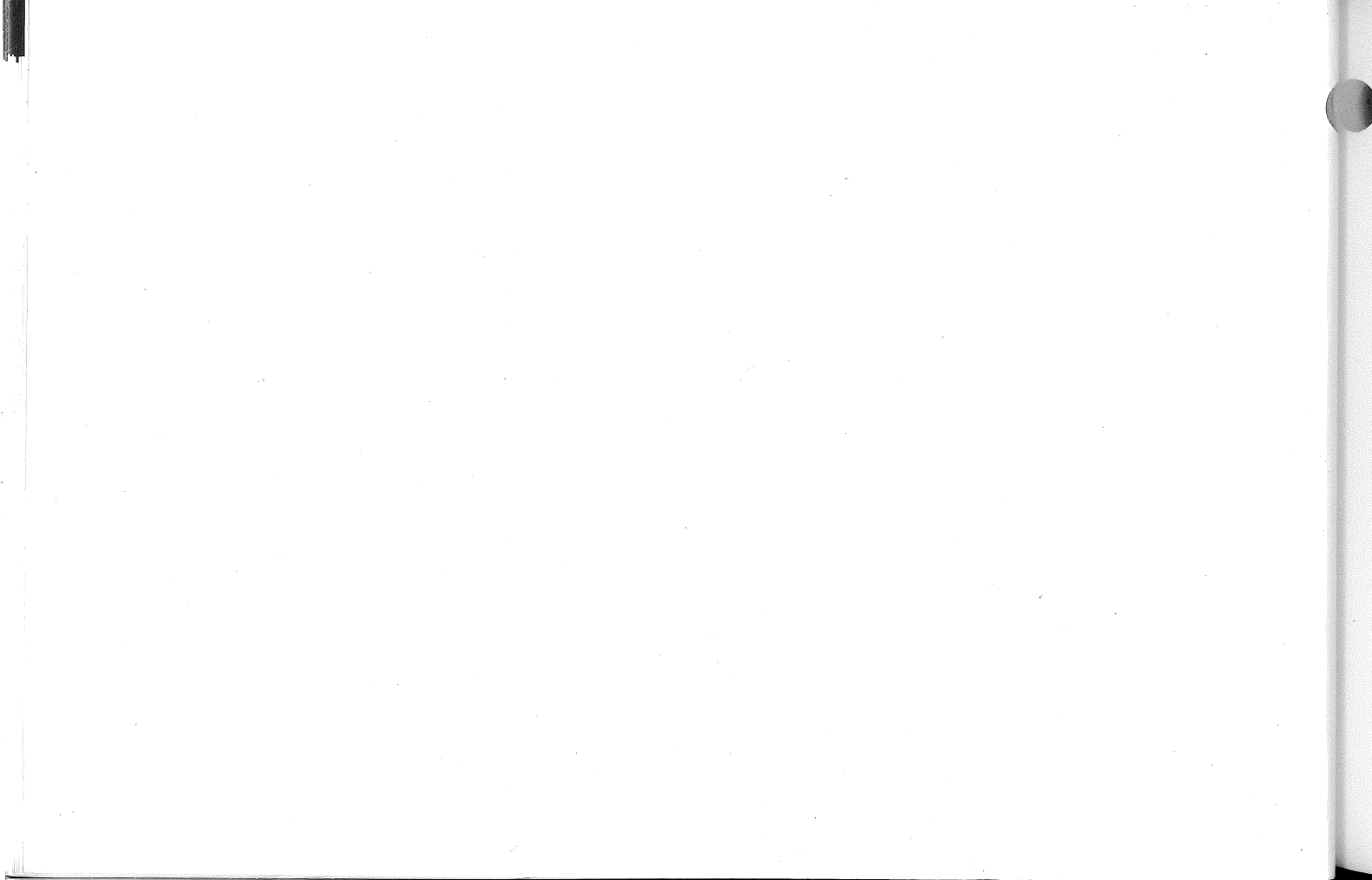


Table of Contents

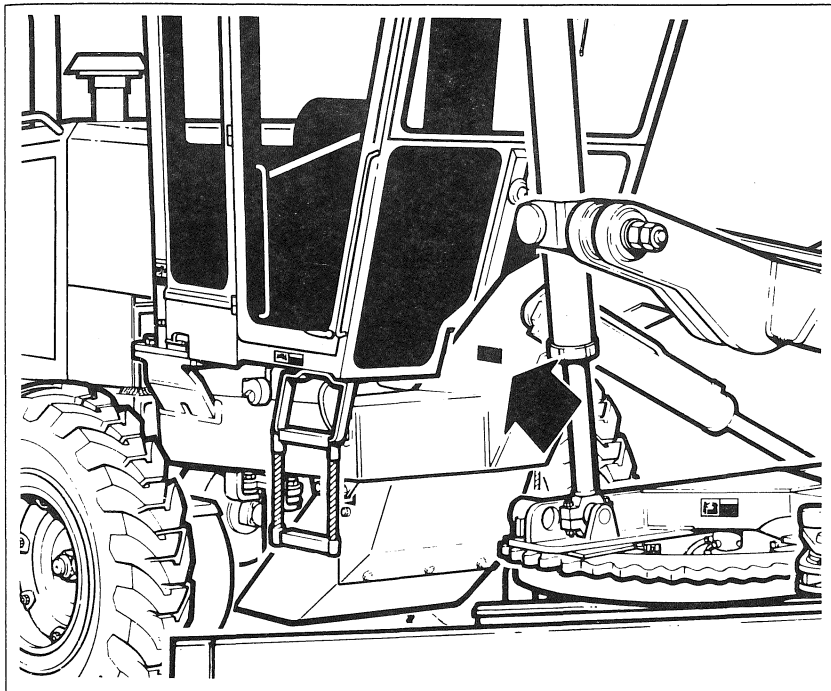
Grader Serial Number Location	5-5
Grader Serial Number Identification	5-6
Transmission Serial Number Location	5-7
Final Drive Serial Number Location	5-7
Engine Serial Number Location	5-8



Grader Serial Number Location

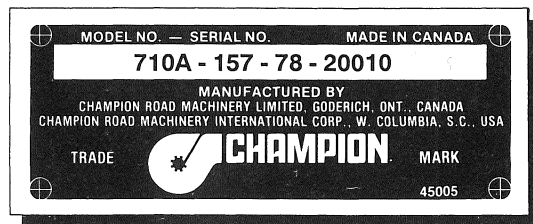
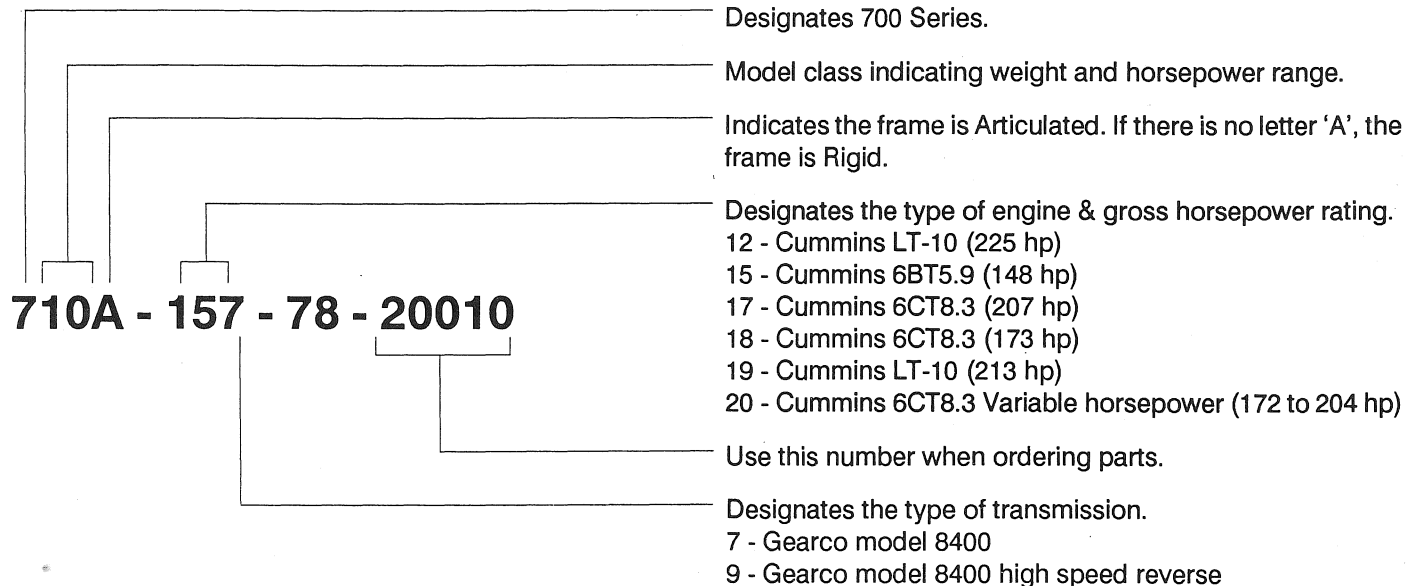
The grader is issued a specific serial number when it is manufactured. This serial number must be used in conjunction with the Parts Manual to order correct replacement parts.

The serial number is stamped on a metal plate attached to the right-hand side of the frame in front of the cab.



Record Grader Serial Number

Grader Serial Number Identification

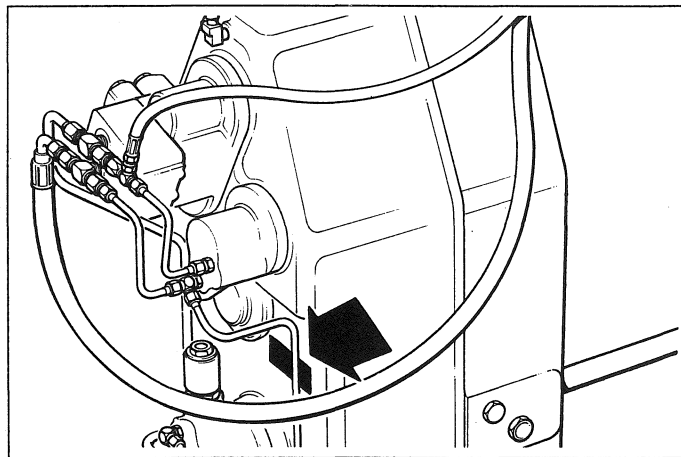


SERIAL NUMBER LOCATIONS

Transmission Serial Number Location

Located on lower front of transmission.

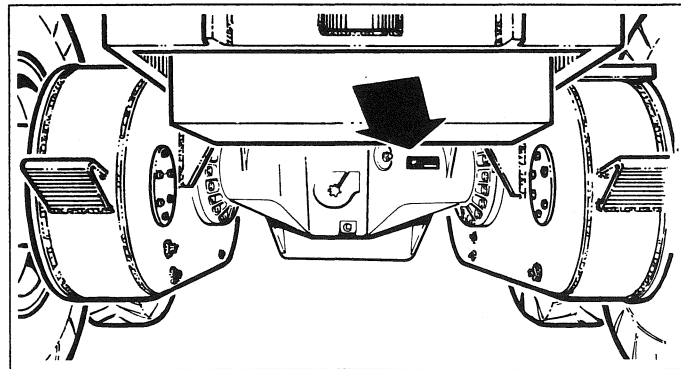
Record Transmission Serial Number

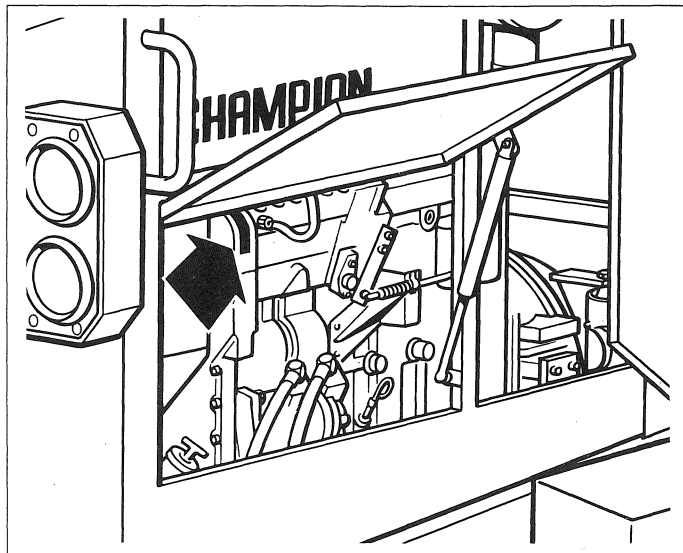


Final Drive Serial Number Location

Located on rear or top of final drive.

Record Final Drive Serial Number



**Engine Serial Number Location**

Cummins 6BT and 6CT engines - located on fan end of engine, right-hand side of grader. See Engine Manual.

Cummins LT-10 engine - located on top, front, right-hand side of engine.

Record Engine Serial Number